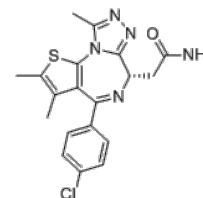


**Product Name** : CPI203  
**Cat. No.** : PC-62511  
**CAS No.** : 1446144-04-2  
**Molecular Formula** : C<sub>19</sub>H<sub>18</sub>ClN<sub>5</sub>OS  
**Molecular Weight** : 399.897  
**Target** : Bromodomain  
**Solubility** :



## Biological Activity

CPI 203 (TEN 010, JQ-2, RG-6146) is a primary amide analog of (+)-JQ1 and a **BET bromodomain** inhibitor that shows cytotoxicity against MCL cell lines with GI<sub>50</sub> of 0.1-0.3 μM; synergizes the antitumor activity of lenalidomide in bortezomib-resistant mantle cell lymphoma; also enhances the antiproliferative effects of rapamycin on human neuroendocrine tumors, overcomes resistance to ABT-199 (Venetoclax) by downregulation of BCL-2 in in vitro and in vivo models of MYC+/BCL2+ double hit lymphoma.

## References

- Moros A, et al. Leukemia. 2014 Oct;28(10):2049-59.  
Wong C, et al. Cell Death Dis. 2014 Oct 9;5:e1450.  
Siegel MB, et al. Oncotarget. 2015 Aug 7;6(22):18921-32.  
Esteve-Arenys A, et al. Oncogene. 2018 Jan 22. doi: 10.1038/s41388-017-0111-1.

**Caution: Product has not been fully validated for medical applications. Lab Use Only!**

E-mail: tech@probechem.com